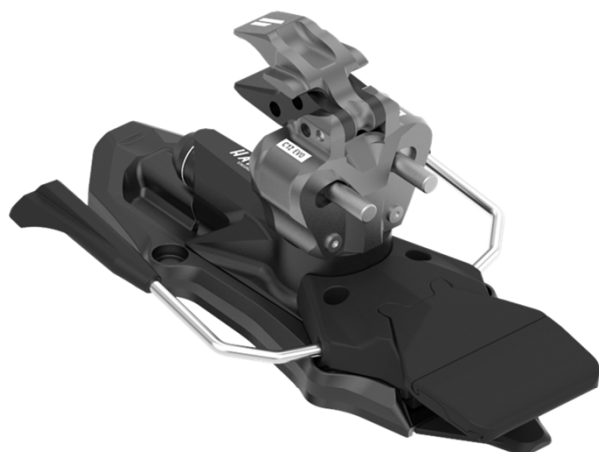




HAGAN

ENGINEERED BY  ATKBINDINGS



CORE 12 EVO BINDINGS



EN) USER'S USE AND MAINTENANCE GUIDEBOOK **TO BE DELIVERED TO THE ORIGINAL USER ONLY**

IT) Scarica il file completo nella tua lingua preferita tramite la sezione download del sito www.atkbindings.com

DE) Laden Sie die vollständige Datei in Ihrer bevorzugten Sprache über den Download-Bereich auf www.atkbindings.com herunter

FR) Téléchargez le fichier complet dans la langue de votre choix via la section de téléchargement à l'adresse www.atkbindings.com

MADE IN ITALY

Lib132 – rev0

INDEX

1.INTRODUCTION.....	2
1.1 KEY SYMBOLS.....	2
2.GENERAL INFORMATION AND WARNINGS.....	3
2.1 MAGNETIC FIELDS WARNING.....	3
3.SEAL OF LIABILITY.....	4
4.INSTRUCTIONS FOR USE.....	5
4.1 WALK MODE TOE PART.....	5
4.2 WALK MODE HEEL PART.....	6
4.3 SKI MODE.....	7
4.4 HOW TO STEP OUT OF THE BINDING.....	9
5.IMPORTANT SPECIFICATION.....	9
6.REVISION PROCESS.....	12
7.MAINTENANCE.....	13
8.WARRANTY TERMS.....	14
9.LIMITATION OF LIABILITY ON THE PRODUCT.....	16
10.CONTACTS.....	16

1. INTRODUCTION

1.1 KEY SYMBOLS

Pay particular attention to these symbols:



WARNING! DANGER! The combination of this symbol and these words suggests a potentially dangerous situation that could cause serious or deadly injuries if not avoided.

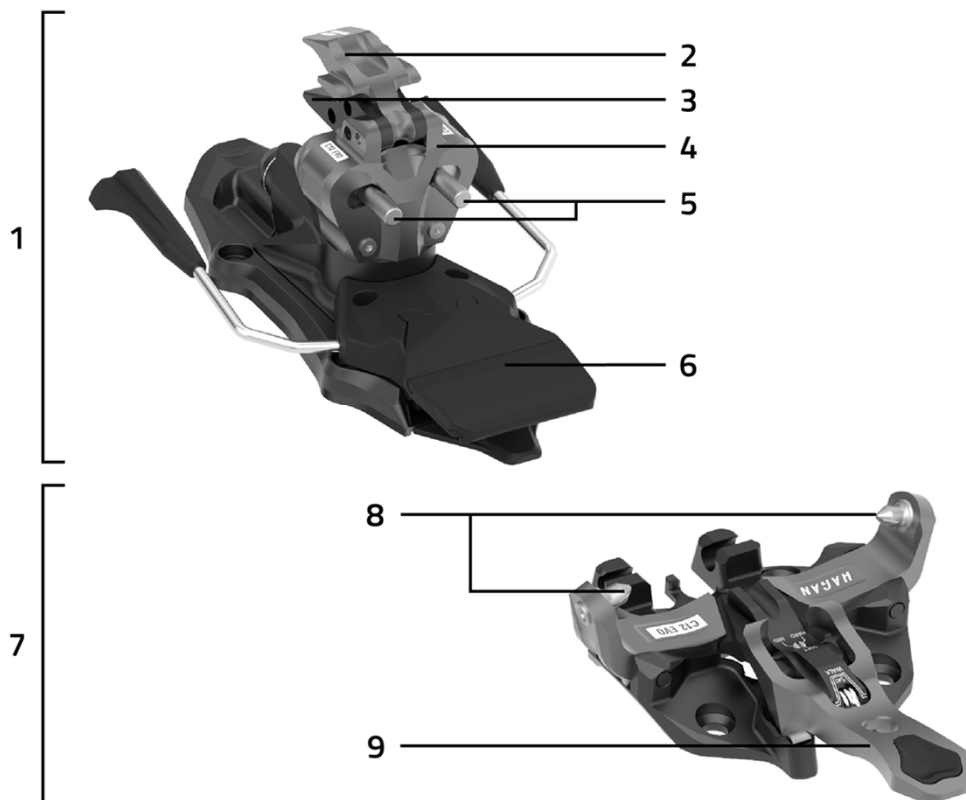


CAUTION! The combination of this symbol with this word suggests a potentially dangerous situation that could cause minor injuries or being a warning for dangerous behaviors if not considered.



NOTICE This symbol warns about the important information that the user should be aware of.

2. GENERAL INFORMATION AND WARNINGS



BINDINGS' MAIN PARTS:

- 1. HEEL PART**
- FIRST HEEL RAISER
- SECOND HEEL RAISER
- HEEL HEAD
- HEEL HOOKING PINS
- REAR SKI BRAKE
- 7. TOE PART**
- TOE HOOKING PINS
- FRONT LOCKING LEVER

2.1 MAGNETIC FIELDS WARNING



WARNING! DANGER!

This binding is equipped with systems capable of generating **weak magnetic fields** that could interfere with the proper functioning of life-saving medical devices such as implanted pacemakers or defibrillators but also magnetic cards, watches or compasses.

Keep the binding at a distance of at least 10cm from any device whose proper operation could be affected by the magnetic field generated by the systems contained in the binding.

3. SEAL OF LIABILITY

WARNING! DANGER!

SEAL OF LIABILITY AND REMOVAL OF THE SAME

A Seal of Liability has been securely and carefully applied to each binding produced by ATK SPORTS S.R.L. during the packaging operations.

The removal of this seal MUST BE EXCLUSIVELY PERFORMED by the original user itself. The removal of the Seal of Liability represents the proof of the full, direct, careful and conscious acknowledgment of the entire content of the USE and MAINTENANCE GUIDEBOOK included within the product packaging itself. It also represents the full acknowledgment of the whole parts and paragraphs highlighted by the words

 **WARNING! DANGER!**

If the Seal of Liability is not present on the purchased binding, please DO NOT USE the product and immediately contact ATK SPORTS S.R.L. at the e-mail address customercare@atkbindings.com and wait for further instructions.

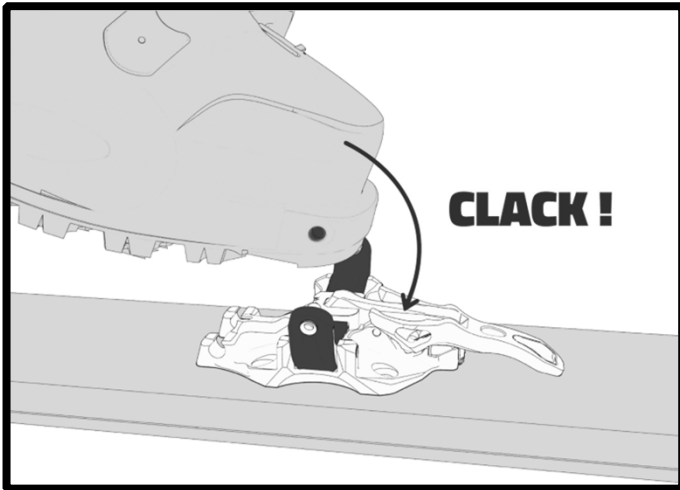
The Original User assumes the absolute responsibility of delivering this USE and MAINTENANCE GUIDEBOOK and the Seal of Liability to any secondary users of this product (even if temporary).

This binding model DOES NOT COMPLY WITH ANY DIN/ISO SAFETY STANDARD NOR ANY OTHER SAFETY CERTIFICATION. In particular, this binding does not comply with DIN/ISO 11088 and/or DIN/ISO 13992 safety standards.

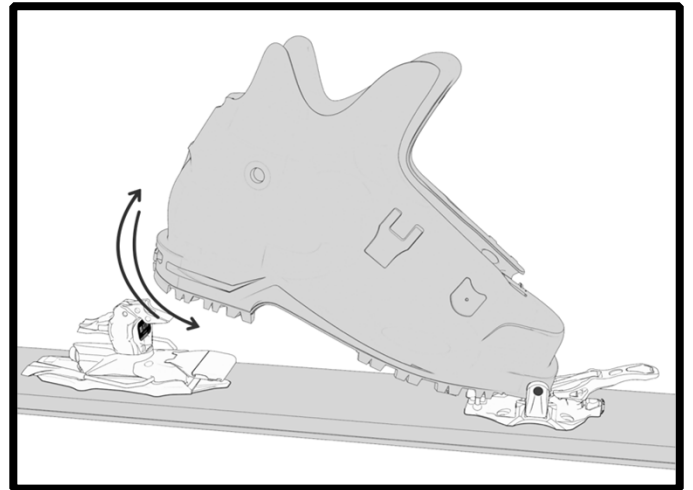


4. INSTRUCTIONS FOR USE

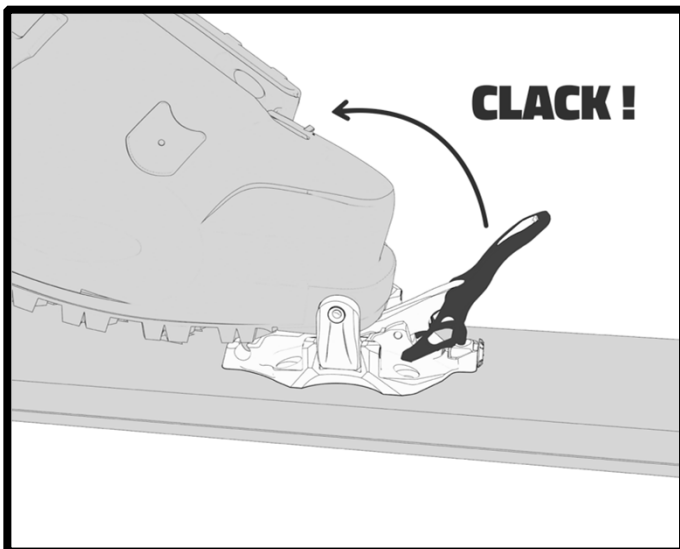
4.1 WALK MODE/UPHILL WALKING MODE: TOE PART



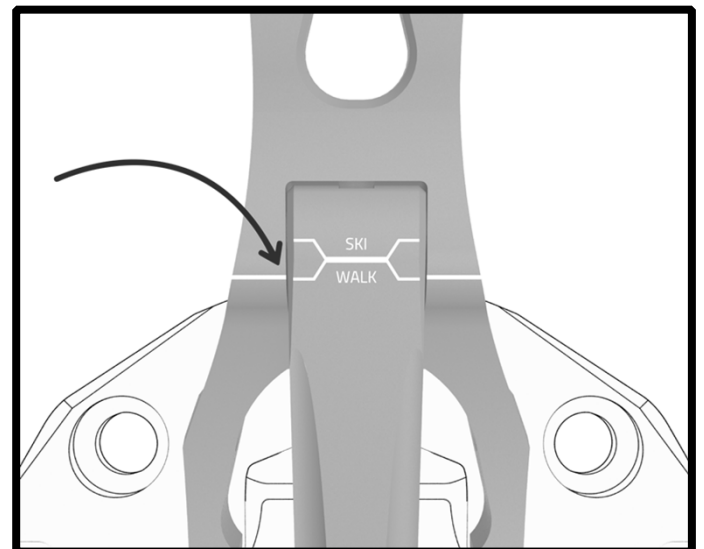
Hook the boot to the toe part by stepping over the pins area. The step-in operation will be complete just when a «CLACK!» sound will be clearly heard.



Rotate the boot around the toe hooking pins a few times by raising and lowering the heel in order to remove any debris/ice from the front tech insert seats.

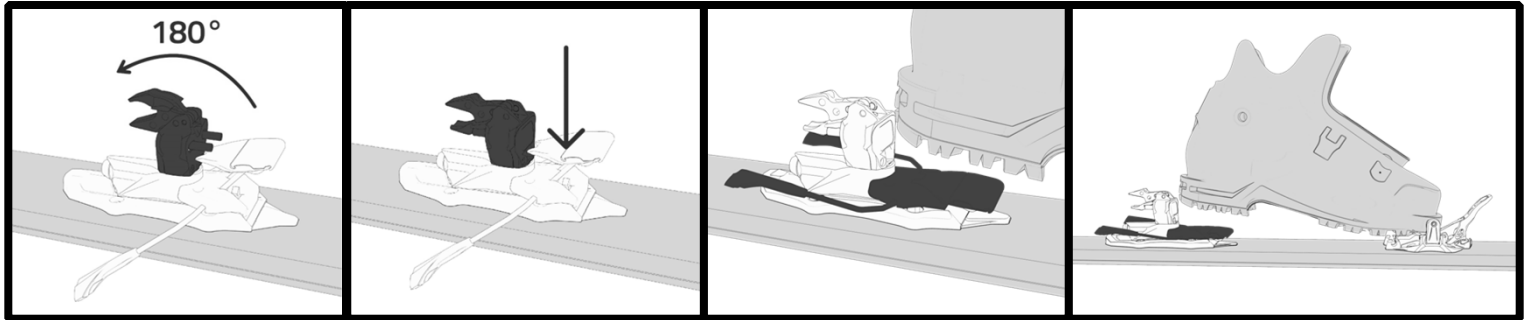


Pull the front locking lever towards the boot until a «CLACK!» sound can be clearly heard.

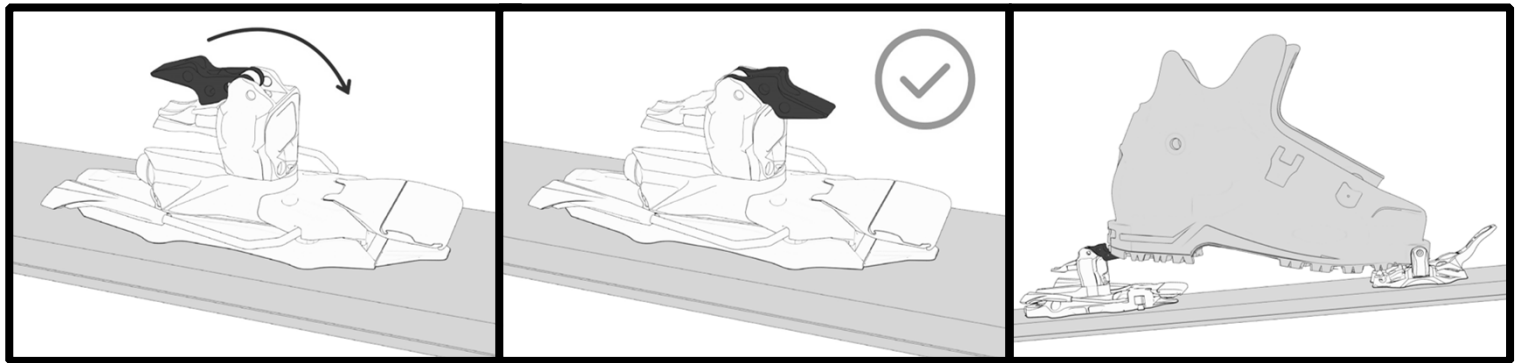


Before proceeding with the uphill walking mode, make sure that the lever has been set and stabilized in the **WALK** position as it is shown in the picture above.

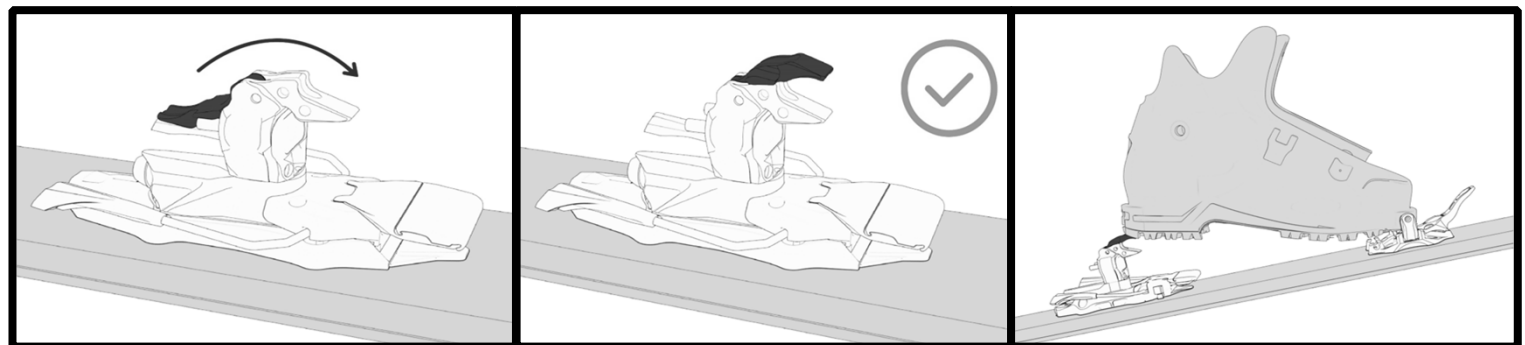
4.2 WALK MODE/UPHILL WALKING MODE:HEEL PART



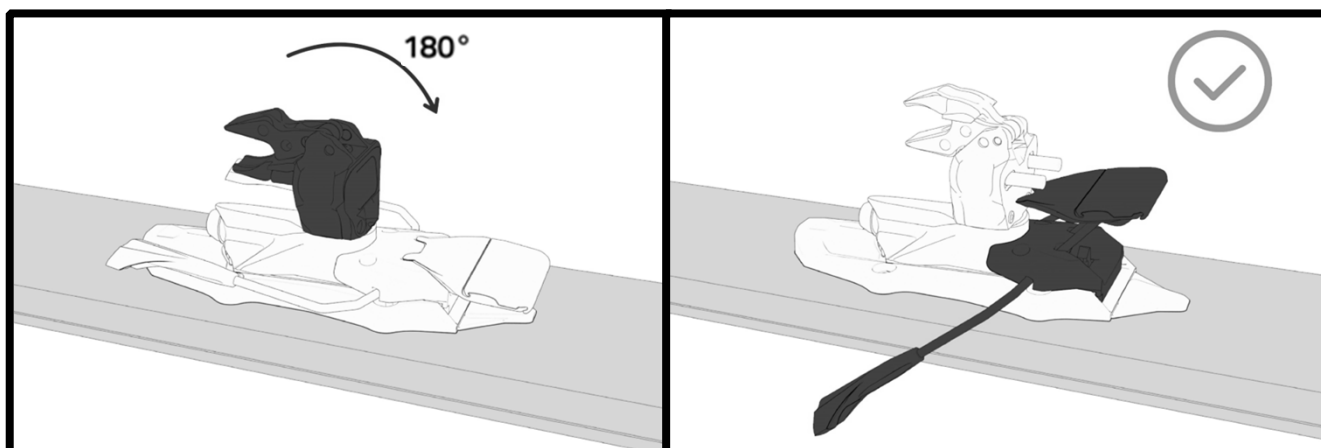
Rotate the heel's head in the uphill position with the heel hooking pins facing the tail of the ski; press with the hand the ski brake's pedal till the end of the range: the ski brake will be stabilized in the up-hill position. Proceed without the HEEL RAISER in case of flat land.



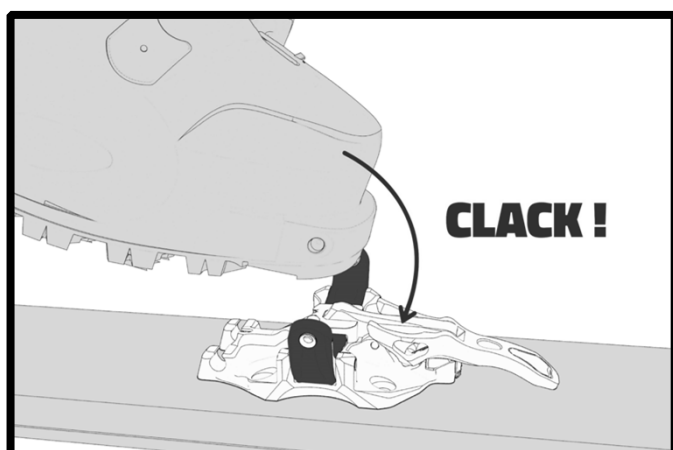
In case of moderate slopes use the FIRST HEEL RAISER.



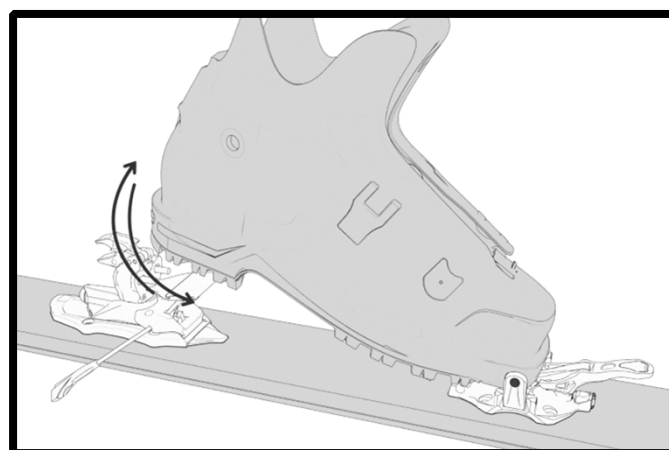
In case of steep slopes use the SECOND HEEL RAISER.



Rotate the heel head in the downhill position with the heel hooking pins facing the ski's tip; the ski-brake will activate automatically. In order to have a gradual activation of the ski-brake, press and keep pressed the pedal before the head rotation, then slowly release it.

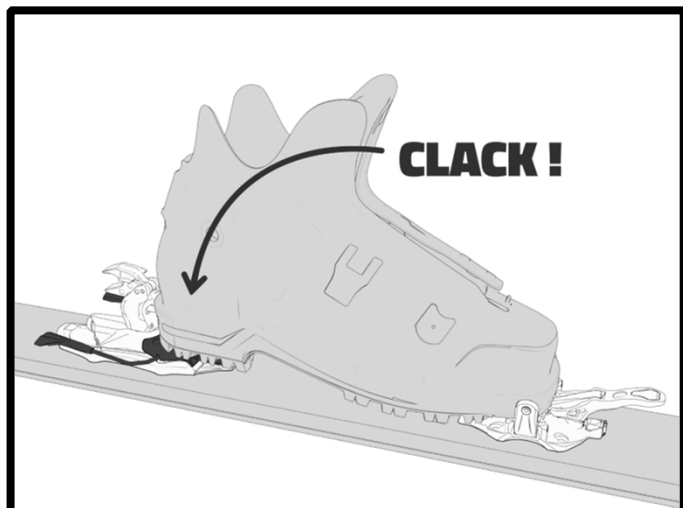


Hook the boot to the toe part by stepping over the pins area. The step-in operation will be complete just when a «CLACK!» sound will be clearly heard.

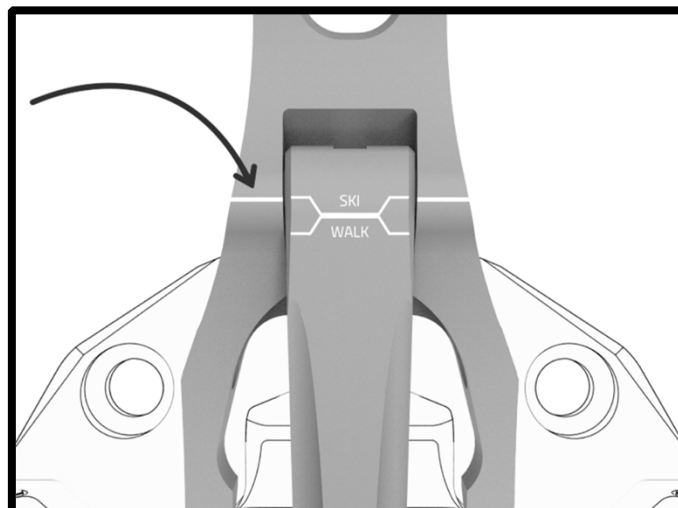


Rotate the boot around the toe hooking pins a few times by raising and lowering the heel in order to remove any debris/ice from the front tech insert seats.

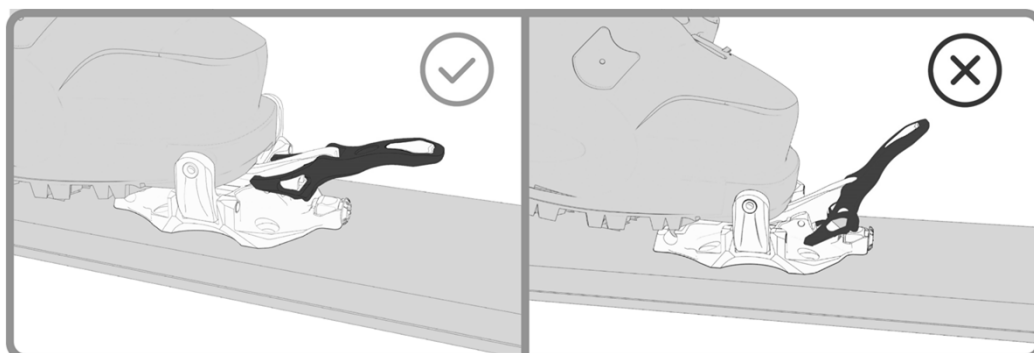
Check the correct boot-binding coupling: temporarily lock the front locking lever in the WALK mode and then immediately move it back into the SKI mode; if this operation can be easily accomplished the hooking between the boot and the toe part is correct. Otherwise, proceed by removing the ice and the debris from the adjustment system.



Hook the boot to the heel part by lowering vigorously the heel until the «CLACK» sound can be heard.



Always ensure that the lever is stabilized in the **SKI** position.



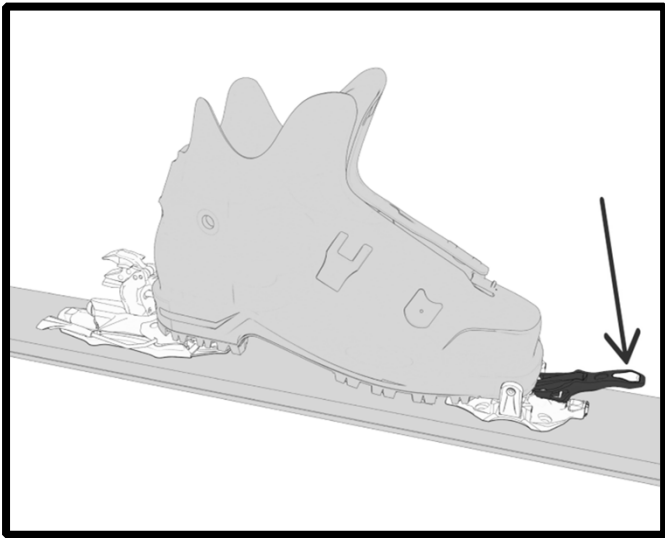
WARNING! DANGER!

The release systems of the binding will be able to operate exclusively when the binding is set in SKI mode.

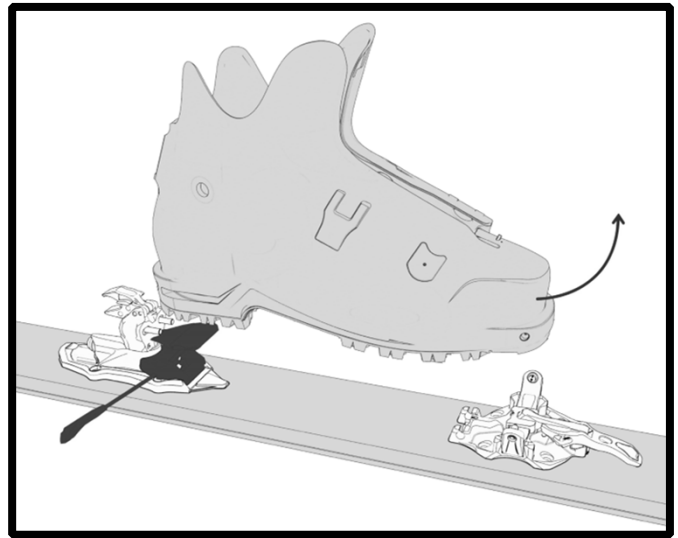
Backcountry skiing frequently leads the skier into wild remote areas and extremely steep and dangerous ski slopes. It is therefore full responsibility of the user itself to evaluate the conditions faced time to time and decide whether to enable the release mechanisms of the binding (SKI mode) or disable them (WALK mode) as a binding release in such conditions would result into a greater risk for the user's safety (principle of least damage).

4.4 HOW TO STEP OUT OF THE BINDING

Before starting the step-out operations, firmly hold the ski by one hand in order to avoid an out-of-control ski loss.



Proceed by opening the toe part either pressing the front locking lever by hand or with the tip of the poles.



Lift and rotate the boot tip to completely get out from the binding.

5. IMPORTANT SPECIFICATIONS



WARNING! DANGER!

- Installation, adjustment, calibration and compatibility checks operations on these bindings and eventual accessories must be exclusively performed by a SPECIALIZED ATK TECHNICIAN with a valid certificate (the list of the SPECIALIZED ATK TECHNICIANS is available online: www.atkbindings.com). Any Do-It-Yourself operation or operation performed by a technician who is not in possess of a valid certificate as SPECIALIZED ATK TECHNICIAN is forbidden because they could lead to greater risks for the User or third parties' safety, but also damage the gear.
- The toe part set in WALK mode will be solidly locked to the boot: in case of falls or other accidental events the release systems will not operate any release.



WARNING! DANGER!

- In case a boot release happens when the toe part is set in WALK mode, it is highly recommended to immediately stop any activity and reach a SPECIALIZED ATK TECHNICIAN and start up a FACTORY SERVICE PROCESS.
- During the ascent, an accidental impact, or any other event, may move the front locking lever of the binding from the WALK mode to the SKI mode. This represents a great danger for the user who may experience an undesired boot release with consequent risks of falling or slipping and the possibility of generating damages to itself or third parties: frequently check the correct setting and stabilization of the front locking lever of the binding, especially in case of accidental impacts during the kick-turns.
- While descending, an accidental impact, or any other event, may move the front locking lever of the binding from the SKI mode to the WALK mode. This leads to the deactivation of the release systems: frequently check the position and stabilization of the front locking lever.
- Frequently check (before each use or immediately after an extraordinary event such as bad falls) that: 1) the binding is correctly fixed to the ski and that the screws are correctly tightened 2) the ski internal structure is not damaged 3) the elastic and spring-loaded systems work with the usual fluidity 4) the bindings do not have defective, worn or damaged parts 5) the proper distance between the boot and the binding (4mm in between rear boot insert and heel head area in between the heel pins) 6) the correct alignment between the boot, the toe part and heel part (0.5mm tolerance by any side). If one or more of these conditions are not confirmed, or cannot be confirmed by the user, please immediately stop the use of the ski-set, and promptly reach a SPECIALIZED ATK TECHNICIAN to start up a FACTORY SERVICE PROCESS in order to avoid additional damages to the binding and/or consequent risks of danger for the user and third parties.
- Any MODIFICATION to the components, non-original accessories installation or NON-PROPER USE of any ATK binding will void the product warranty and increase the risk of injuries for the user and/or third parties.



CAUTION!

- Before proceeding with any operation or use, verify that the boots and the bindings are COMPLETELY FREE from ice, dirt, debris, or any other foreign body that may lead to a failure in the regular functions of the bindings. Check the functional state and the wear and tear condition of the binding and its components: in case of doubts regarding the perfect functionality of one or more of the binding's components, immediately stop any use of the product and promptly reach a SPECIALIZED ATK TECHNICIAN to start up a FACTORY SERVICE PROCESS.
- This binding can only be used in combination with Alpine Touring boots, provided with "TECH" inserts. Every time the boot is being replaced it is necessary to reach out a SPECIALIZED ATK TECHNICIAN for Installation, adjustment, calibration and compatibility checks operations .
- Do not remove the warning sticker in front of the toe part.
- The binding includes some powerful elastic systems. An involuntary, wrong or uncareful activation of these systems is dangerous for the User's or third parties' safety. Always handle these bindings with the proper care.
- The use of a SKIBRAKE or a LEASH (Cod. SBC02: KEVLAR CORE LEASH or similar) is strongly recommended in order to limit the risk of losing the ski and thereby cause damages to things or third parties. In case of deep fresh snow or hard packed snow the efficiency of the ski brake will be dramatically reduced: in such snow conditions the use of a leash is strongly recommended.
- During transportation (ex: car roof, backpack, bike, etc.) always protect the bindings from external agents (e.g., salt) that could damage or alter the regular functioning of the same.
- Any modification, tampering and/or use of non-original accessories will void the warranty. These actions may also interfere with the functionality of the product and increase the risk of failure/breakage of the binding itself.
- Maximum permissible loads:
 - CORE 12 EVO: 100 Kg
- **KEEP OUT OF REACH OF THE CHILDREN.**



NOTICE

- These bindings have been conceived, developed, and produced for backcountry skiing activities where the high performances and the extreme lightness required to this product can influence and/or limit the safety features of the product itself, including the quality or repeatability of the boot release in the event of a fall.
- Some functions of the binding can be handled with a ski pole. However, the use of a ski pole may create scratches and/or an early wear of the product's surfaces.
- The release values calibrated on the binding are indicative. Actual values may differ even significantly from those displayed on the binding.
- Please, be aware that backcountry skiing, like many other high mountain activities, is a DANGEROUS SPORT, that may cause injuries to the ski mountaineers themselves and/or third parties. In the practice of ski mountaineering, dangerous and/or unpredictable situations may occur; never overestimate your skills, never ski if sick or wounded or under the effect of alcohol, medicines, or drugs.
- Do not approach the backcountry alone.
- **Safely store this USER AND MAINTENANCE GUIDEBOOK and the SEAL OF LIABILITY. To store these documents will enable the user to consult them whenever needed. It is also important to store them in order to fulfil the obligation of transferring these to any secondary user of the product.**

6. REVISION PROCESS

Within 4 years from the original purchase date of the product and then every 2 years thereafter, the binding must be submitted to an OFFICIAL ATK REVISION process in order to verify the good state of the product parts and the proper functionality of the whole systems.

The OFFICIAL ATK REVISION process can be activated with the help of a SPECIALIZED ATK TECHNICIAN.

7. MAINTENANCE

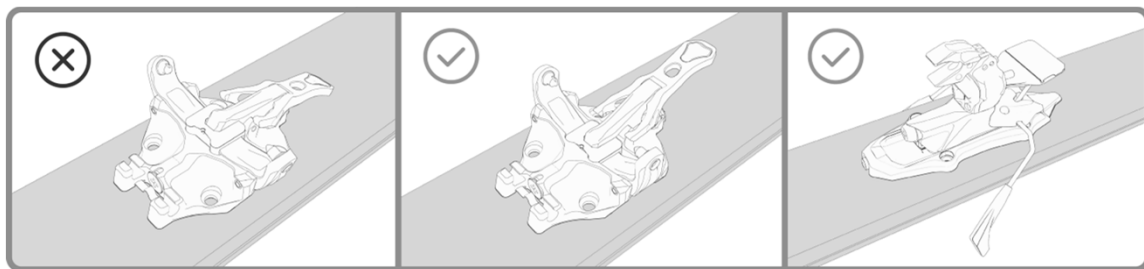


NOTICE

The ordinary maintenance can be done by the binding's user. In case of any doubt, reach out a SPECIALIZED ATK TECHNICIAN in order to get support.

AFTER EVERY USE:

- Carefully clean the binding from dirt, salt, sand, or debris, using distilled water; do not use spears or harsh chemical solvents.
- Store the skis/ski-sets in a dry and protective place; avoid excessive heat.
- When the bindings are not being used, set the heel part in the downhill mode and close the toe part, in order to preserve the elasticity of the springs.



PERIODICALLY (MAX EVERY 30 APPLICATIONS):

- Lubricate the ski brakes with the original ATK grease (SG01)
- Lubricate the heel part's lateral release system
- Lubricate the toe part's step-in system

Video tutorials are available on the official YouTube channel of ATK.

AFTER A MEDIUM TO LONG PERIOD OF INACTIVITY (>3 MONTHS) AND/OR AT THE BEGINNING OF EACH SEASON:

- It is necessary to have your own ski set checked by a SPECIALIZED ATK TECHNICIAN, in order to verify the general wear and tear of the binding, the proper functionality of the systems and to properly lubricate the product.

8. WARRANTY TERMS

ATK guarantees that the product is free from any manufacturing or material defects for a period of two years (2) (pursuant to Italian Legislative Decree n. 24/02) starting from the date of purchase throughout an authorized dealer of ATK products and the respective OEM versions. The effective date of the warranty must be supported by the proof of purchase: without the original proof of purchase, the temporal effect will start from the date in which the product left the ATK warehouses.

The 24 months warranty (pursuant to Italian Legislative Decree n. 24/02) is applied to each product that shows a conformity defect, if properly installed, set, adjusted, compatibility checked by a SPECIALIZED ATK TECHNICIAN and used in the respect of its destination of use and considering the content of the whole documentation provided by the producer with the product, including, but not limited to, the USE AND MAINTENANCE GUIDEBOOK, the SEAL OF LIABILITY applied to the product and the WARNING STICKER applied to the ski.

This warranty, in accordance with Italian Legislative Decree n 24/02, is granted only to Privat consumers (a person who buys goods for purposes not related to his professional activity, therefore purchases the product without any reference to a VAT code).

Known that the ATK bindings are NOT SAFETY CERTIFIED by any certification institute, since they DO NOT COMPLY WITH ANY DIN/ISO SAFETY STANDARD (nor any other safety standard created for ski bindings), the warranty is not valid in case of:

- Wrong installation or installation performed by anyone who is not a SPECIALIZED ATK TECHNICIAN.
- Wrong use.
- Maintenance lack (chapter 7).
- Carelessness.
- Inexperienced use.
- Any modification performed on the product.
- Purchase through a non-ATK authorized dealer.
- Second hand products.
- Overuse (consumption resulting from an abnormal use).
- Wear and tear on consumables, available as regular spare parts.

ATK does not recognize any express or implied warranties other than those specified in this chapter and does not recognize damages raising by:

- Wrong installation, adjustment, calibration and compatibility checks.
- Standard wear and tear, including chipping.
- Wrong set up.
- Use in combination with non-adequate gear per definition or due to wear and tear.
- Use in combination with boots not expressively designed to be used in combination with tech bindings and/or boots that do not comply with the standard TECH system.
- Impacts or collisions with foreign bodies.
- prejudices not directly or necessarily related to the product.
- prejudices connected to the noncompliance with any DIN/ISO SAFETY standard (or any other safety standards created for ski bindings).
- prejudices anyway avoidable with due caution required by the raw mountain environment with low urbanization.
- prejudices increased by the damaged subject behavior.

A warranty process activation can be required by the consumer through a SPECIALIZED ATK TECHNICIAN or through the ONLINE FORM that can be found at the webpage <https://www.atkbindings.com/en/technical-support/>.

In case that all the warranty conditions are satisfied, the warranty case will be opened and ATK will provide the best support possible to have the process closed in the fastest time possible.

Based on the product state, ATK will be free to choose the best solution in between replacing the full product, a part of the same or just repair it. An additional warranty period of 6 months is granted on the parts replaced by ATK during an official service operation, does not matter if under warranty, partial warranty or at customer charge.

In case that the warranty case requires the delivery of the product to the company, the product itself must be returned inside the original box, complete in all its parts.

No refund can be asked to ATK for eventual delays in the procedures under warranty conditions.

The "DEMO/TEST" bindings are intended for an unusual and particularly intensive use, which may modify the lasting performance of the product, accelerating the wear and tear of the product itself. The warranty period on the "DEMO/TEST" products is reduced to one year after the original purchasing date; free-of-charge or loan of use products, given to athletes or testimonials, are fully excluded by any warranty application.

For any further information and/or clarification regarding the functionality of the products and the activation of the warranty operations, please contact ATK at: customercare@atkbindings.com

9. LIMITATION OF LIABILITY ON THE PRODUCT

The USER is fully aware that the ATK bindings DO NOT COMPLY WITH ANY DIN/ISO SAFETY STANDARD, nor any other safety standard created for ski bindings. In particular, these do not comply with DIN/ISO 11088 and DIN/ISO 13992 safety standards.

By purchasing such products in a conscious and informed way as provided by this "USE AND MAINTENANCE GUIDEBOOK", the user expressively accepts without any reserve all the risks arising from the characteristics of the products, relieving ATK by any liability regarding eventual damages caused to the user or third parties during the use of the product itself. Under no circumstances shall the company be liable (i) for any claim arising from an incorrect or wrong application of the guidebook, or (ii) for any issue or matter expressly identified as " ⚠️ WARNING! DANGER!" within the guidebook, or (iii) for any damage that is limited or excluded within the guidebook.

Under no circumstances shall the company be liable for any claim for special, consequential, indirect, punitive, exemplary, or incidental damages (including lost or anticipated income, lost revenues, or lost profits), arising out of the bindings, whether such claim is based on warranty, contract, tort (including negligence or strict liability) or otherwise.

Except as expressly set forth in this guidebook, the company hereby disclaims any representation or warranty, expressed or implied, of any kind with respect to the binding. ATK SPORTS S.R.L. communicates that the pictures and descriptions included in this guidebook are purely indicative; ATK SPORTS S.R.L. has the right to modify or delete each product or process described in this guidebook.

10. CONTACTS

Hagan Ski Ges.m.b.H.

Eggerdingerstrasse 6

A-4980 Antiesenhofen

E-mail: [info\[at\]hagan-ski.com](mailto:info[at]hagan-ski.com)

Internet: www.hagan-ski.com

MADE IN ITALY

Please, recycle this guidebook at the end of the bindings lifetime

